

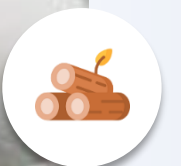
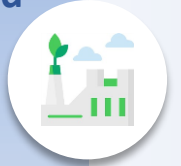


BRR

Buriram Sugar Public Company Limited



Buriram Sugar Public Company Limited



Key Highlights

Key Factors

Financial Summary

Business Outlook



KEY HIGHLIGHTS 2Q22

1 SUGAR BUSINESS

Capacity to crush **23,000** ton of cane per day

BSF CSF BSC



2 SUPPORTING BUSINESS

Fertilizer

Logistic

BFB

BRLM



3 POWER BUSINESS

3 Biomass Plants with total capacity **29.70 MW**

BEC 9.9 MW. BPC 9.9 MW. BPP 9.9 MW.



4 GROWTH BUSINESS

NEW BUSINESS

Holding Wood Pellet EPC

BGH BGE/SR BIRT



Pulp Packaging

SEW




Revenue

5,080.75 MB

EBITDA

1,030.30 MB

Net Profit

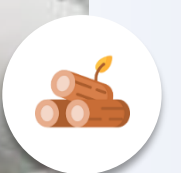
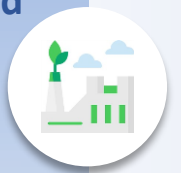
716.05 MB

Note : Performance 6 Months





Buriram Sugar Public Company Limited



Key Highlights

Key Factors

Financial Summary

Business Outlook

KEY FACTORS 2Q2022

SUPPORTIVE KEY FACTORS



Rising Sugar Price

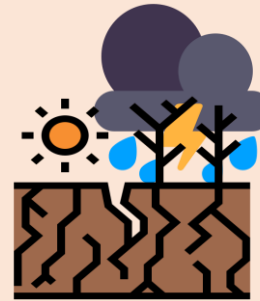


Declining Sugar Supply



Thai Baht Depreciation

CHALLENGES & RISKS



Climate Change



Government Policy

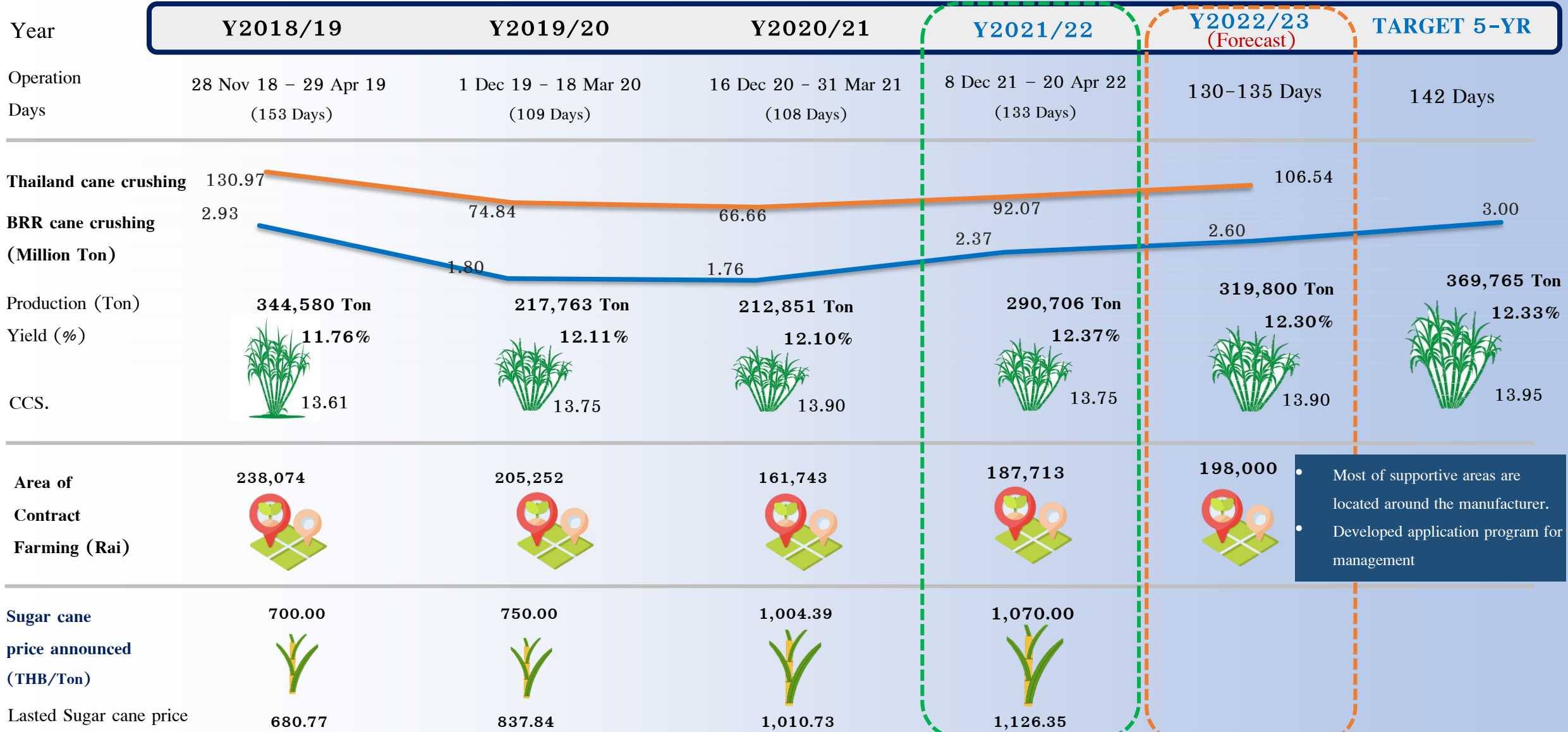


Consumer Behavior



Inflation

Life Quality of Sugarcane Farmers **DRIVEN** Sugarcane Efficiency



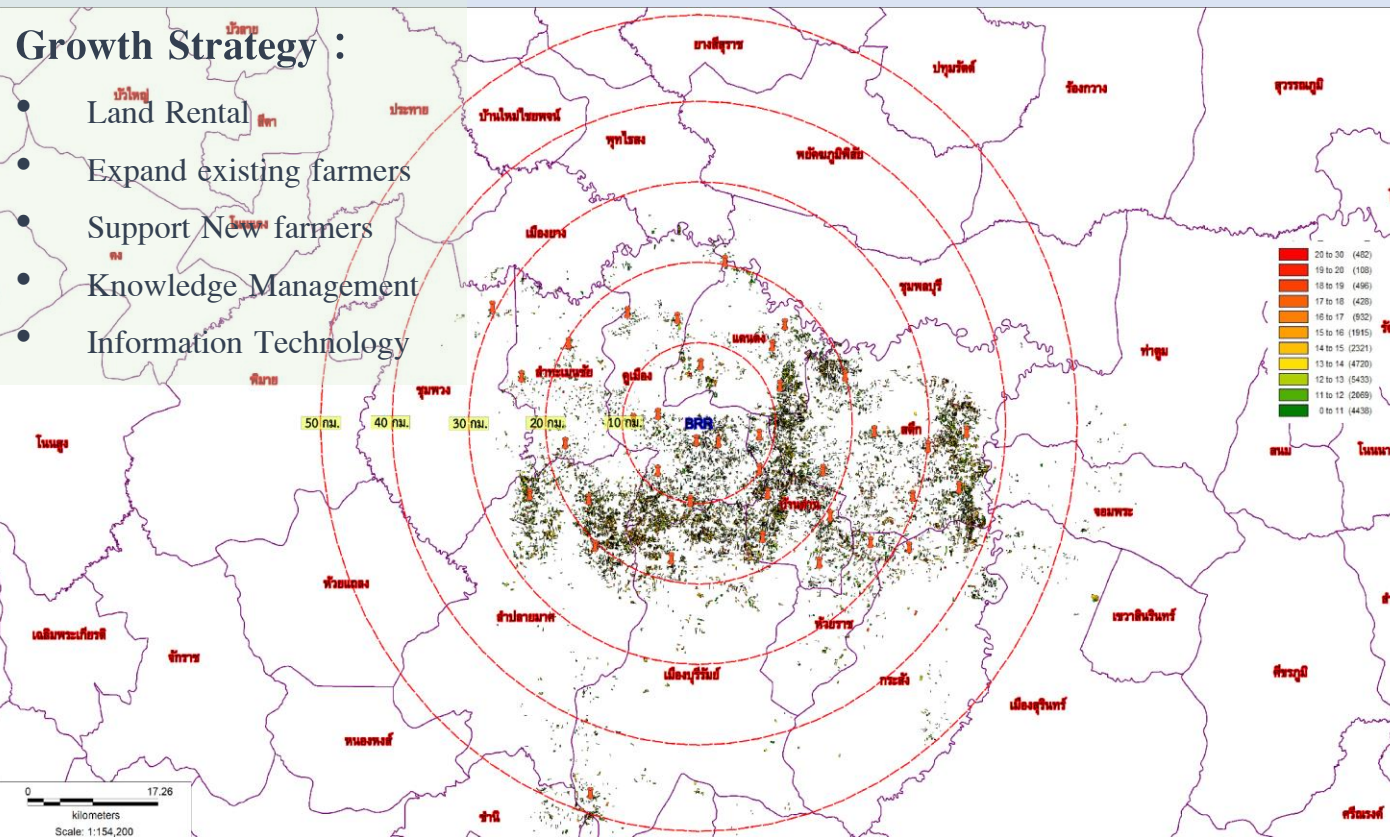
- Most of supportive areas are located around the manufacturer.
- Developed application program for management

SUGAR CANE PLANTING AREA MAP – Target 198,000 Rais in Y2022/23

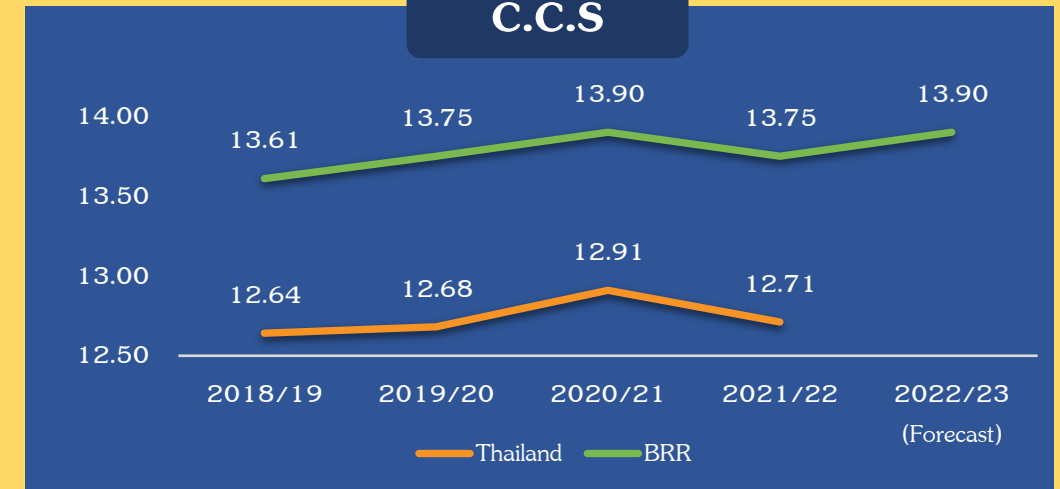
(Radius 0-50 K.M. around BRR's Factory)

Growth Strategy :

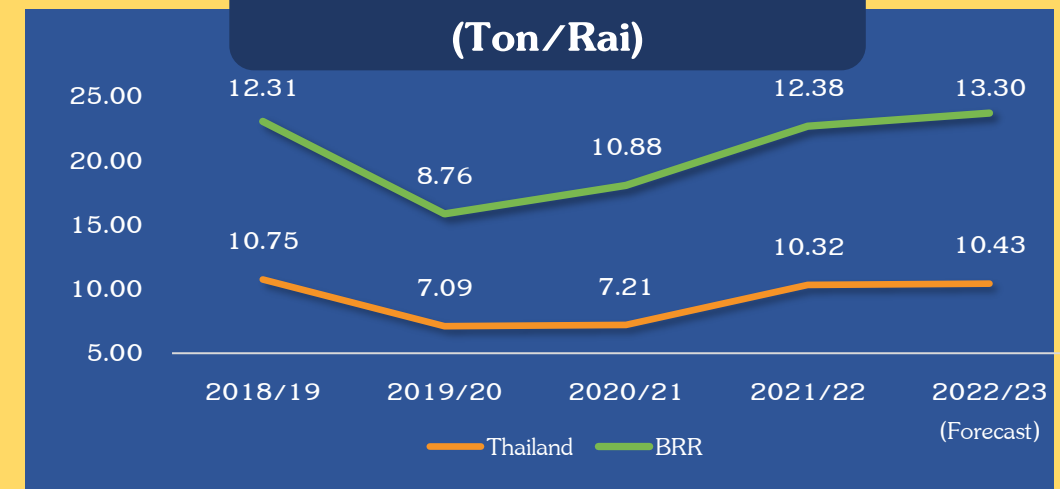
- Land Rental
- Expand existing farmers
- Support New farmers
- Knowledge Management
- Information Technology



C.C.S



Average Cane Production (Ton/Rai)



5-YR BUSINESS GROWTH

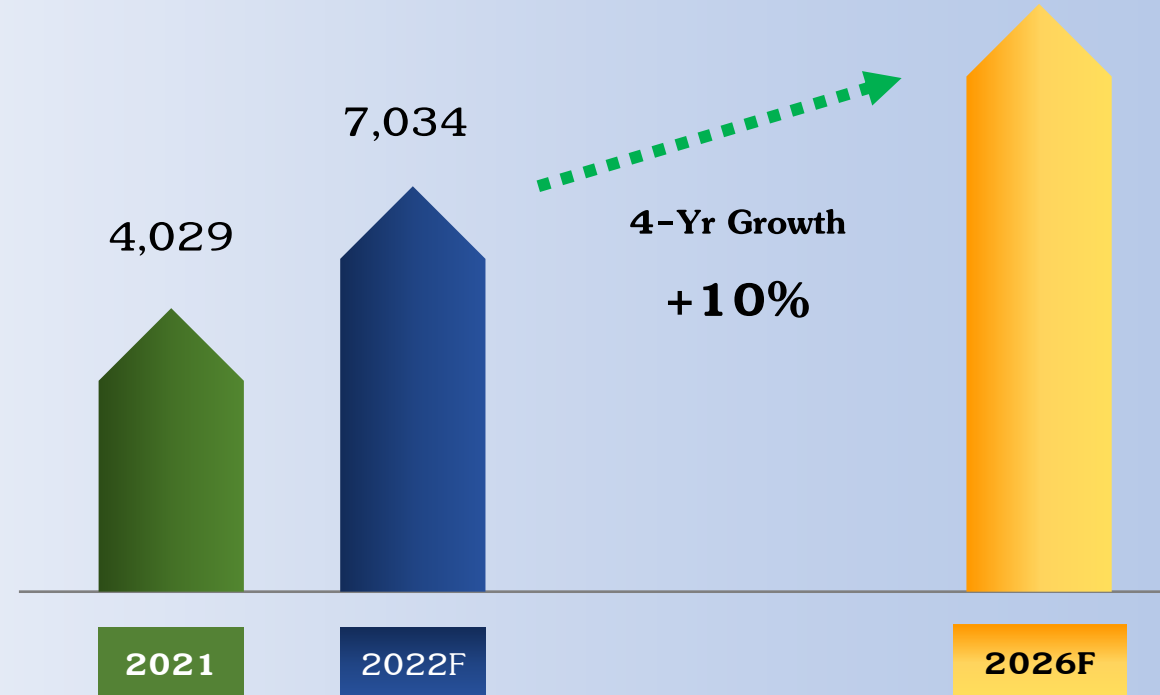
REVENUE
TARGET
FY2026

*Total Revenues

Supported by
SUGAR, PULP PACKAGING and WOOD PELLET GROWTH



Target
7,748
THBmn



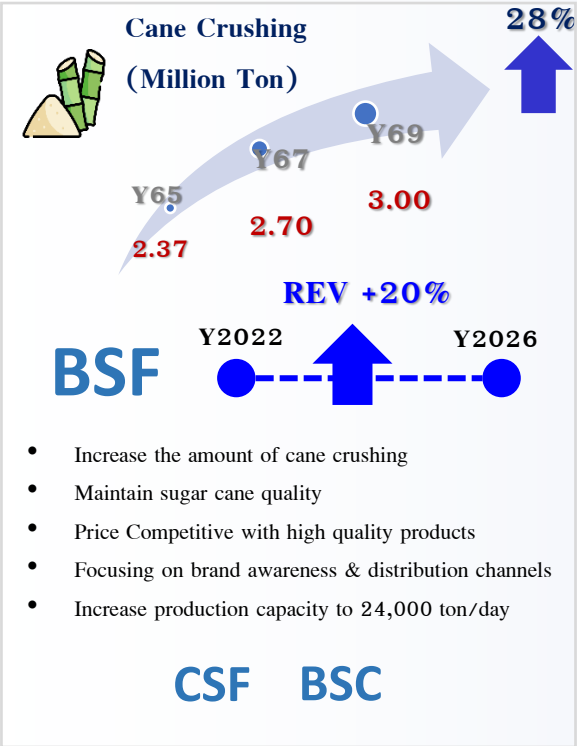
Sugar Made in the Field

BUSINESS DIRECTION IN 5-YRS

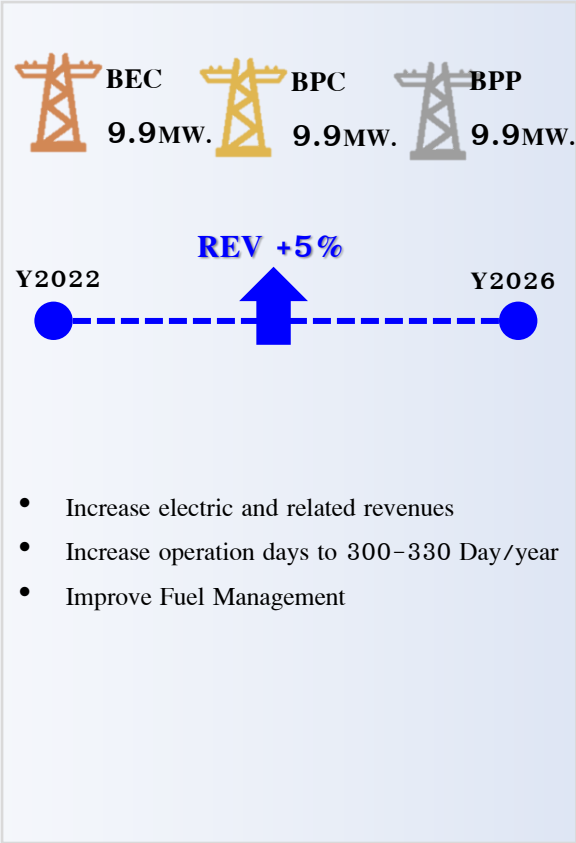


HOLDING COMPANY

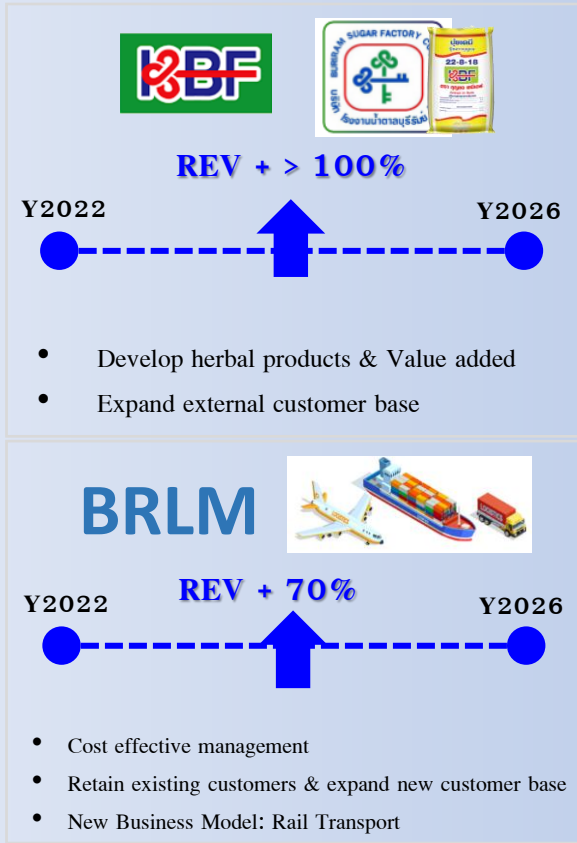
SUGAR BUSINESS



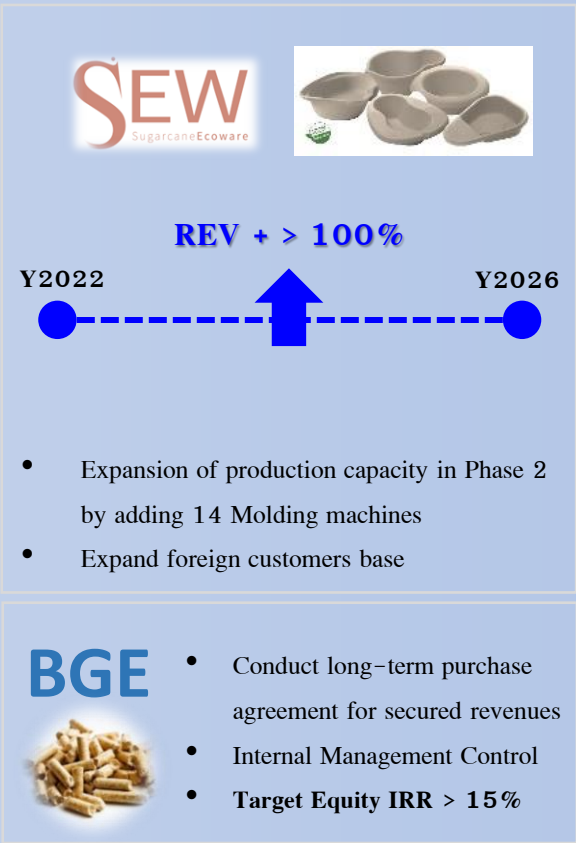
POWER BUSINESS



SUPPORTING BUSINESS



GROWTH & NEW BUSINESS



Sugar Made in the Field



BRR

Jaymart



BUSINESS OPPORTUNITIES



Financial Services



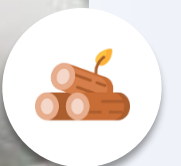
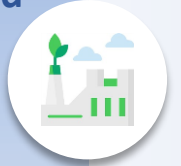
Technology (Smart Farming)



Commercial Retail



Buriram Sugar Public Company Limited



Key Highlights

Key Factors

Financial Summary

Business Outlook

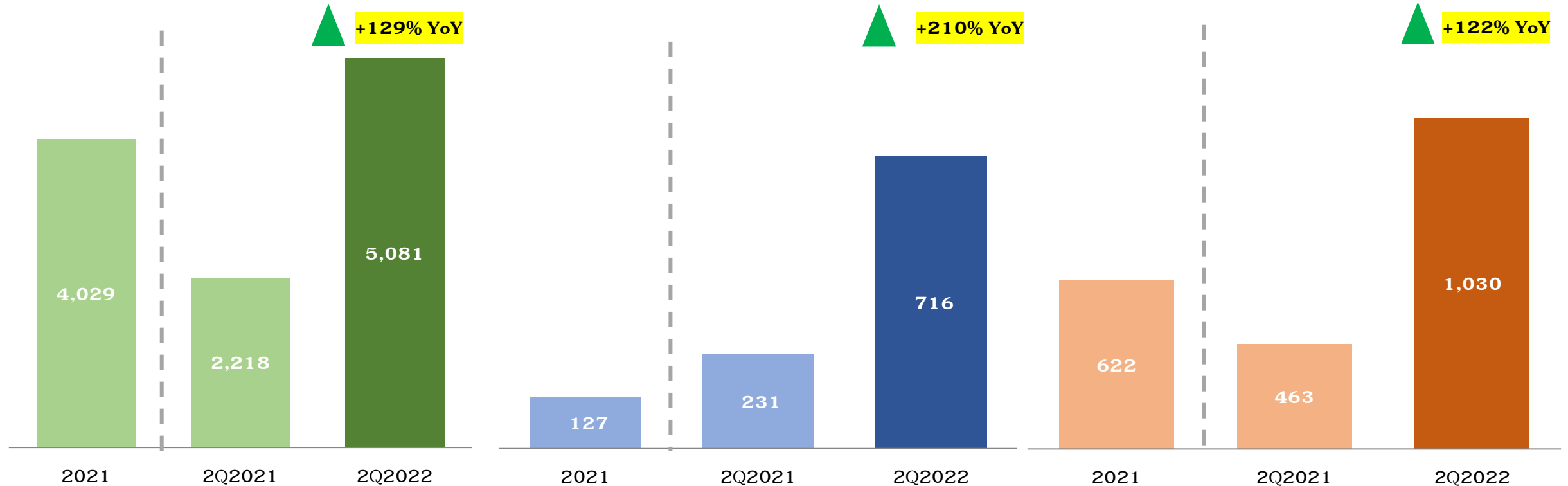
FINANCIAL SUMMARY

Buriram Sugar Public Company Limited

REVENUES (THBmn)

PROFIT & LOSS (THBmn)

EBITDA (THBmn)



Note : Performance 6 Months

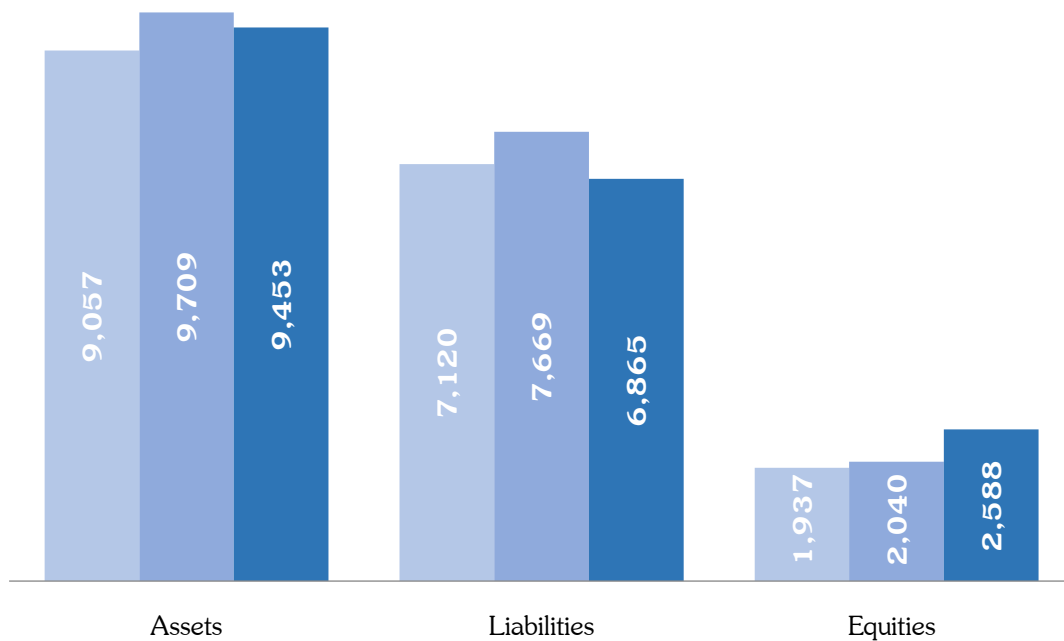
Sugar Made in the Field

FINANCIAL SUMMARY

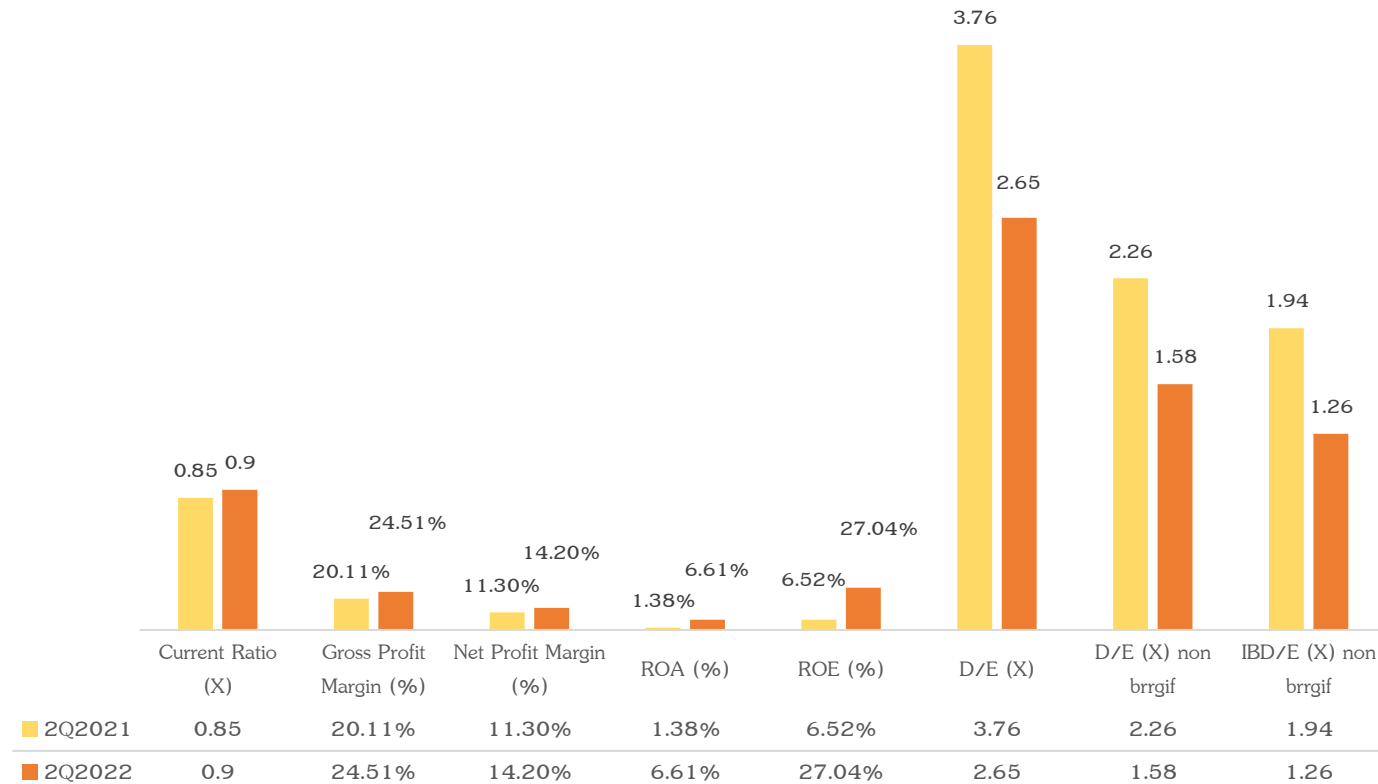
Buriram Sugar Public Company Limited

STATEMENT OF FINANCIAL POSITION (THBmn)

■ 2021 ■ 2Q2021 ■ 2Q2022



FINANCIAL RATIO

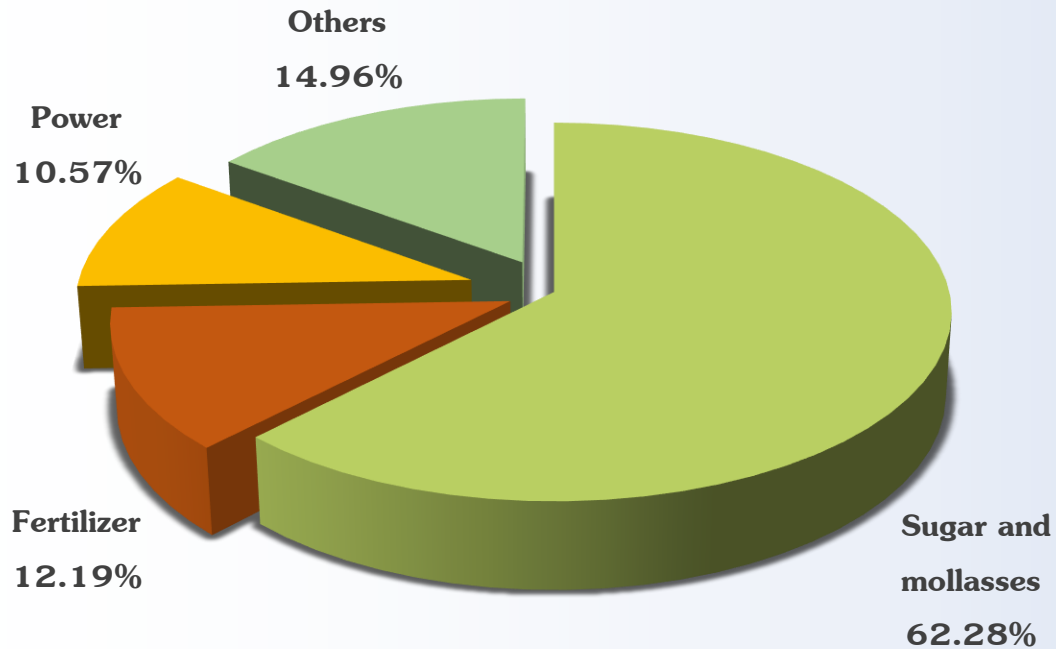


Note : Performance 6 Months
ROA & ROE are annualize

FINANCIAL SUMMARY

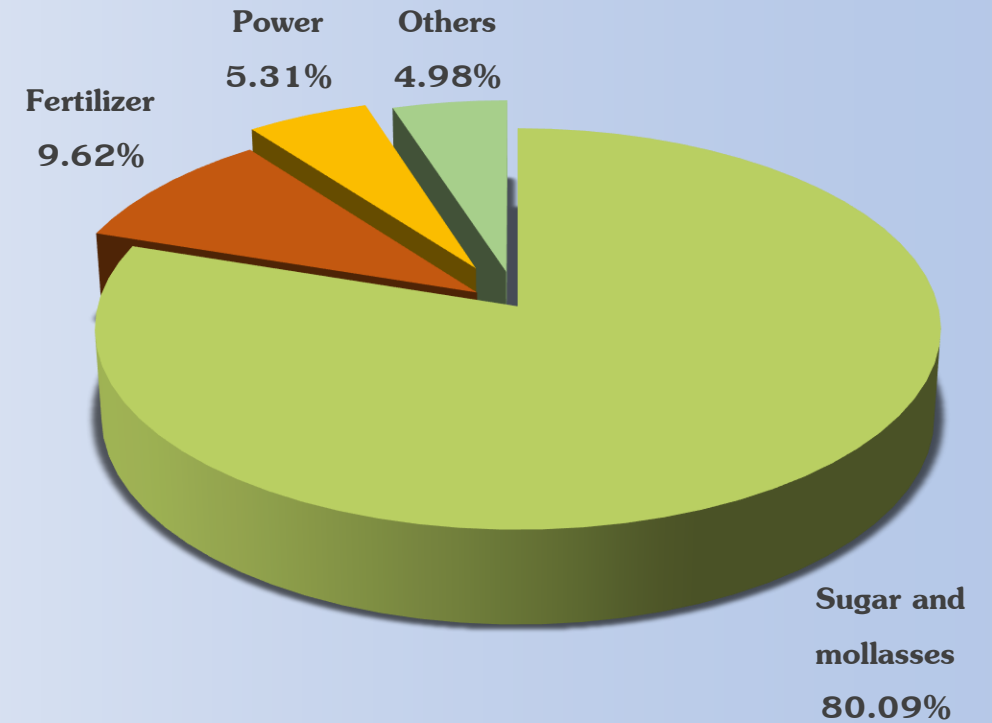
Total Revenue Breakdown

2Q2021



■ Sugar and mollasses ■ Fertilizer ■ Power ■ Others

2Q2022



■ Sugar and mollasses ■ Fertilizer ■ Power ■ Others

Note : Other revenues including Logistic Services by BRLM, Pulp Packaging by SEW, Oil trading revenues, sugar cane harvest services and other revenues.

Note : Performance 6 Months

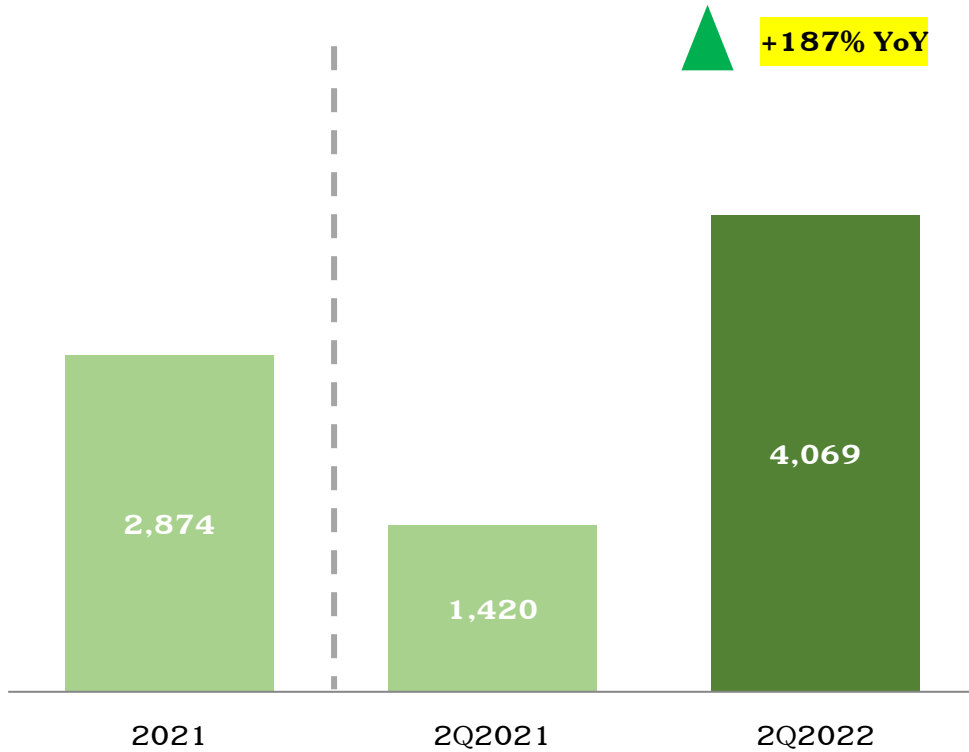
Sugar Made in the Field

FINANCIAL SUMMARY

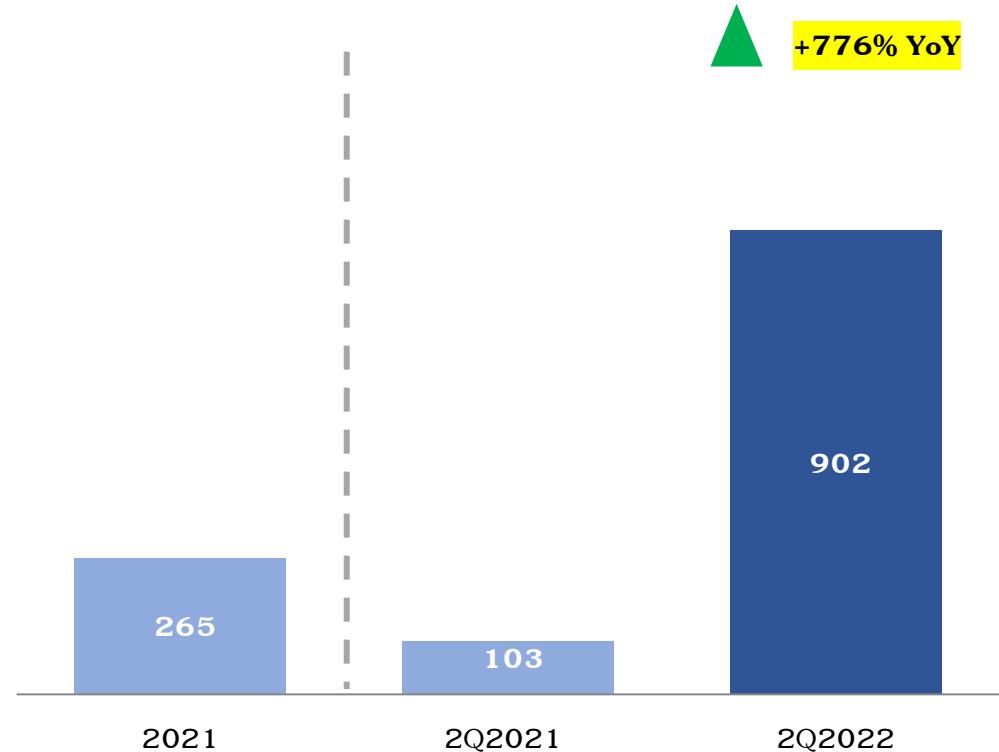
Sugar Business (Core Business)



REVENUES (THBmn)



OPERATING PROFIT (THBmn)

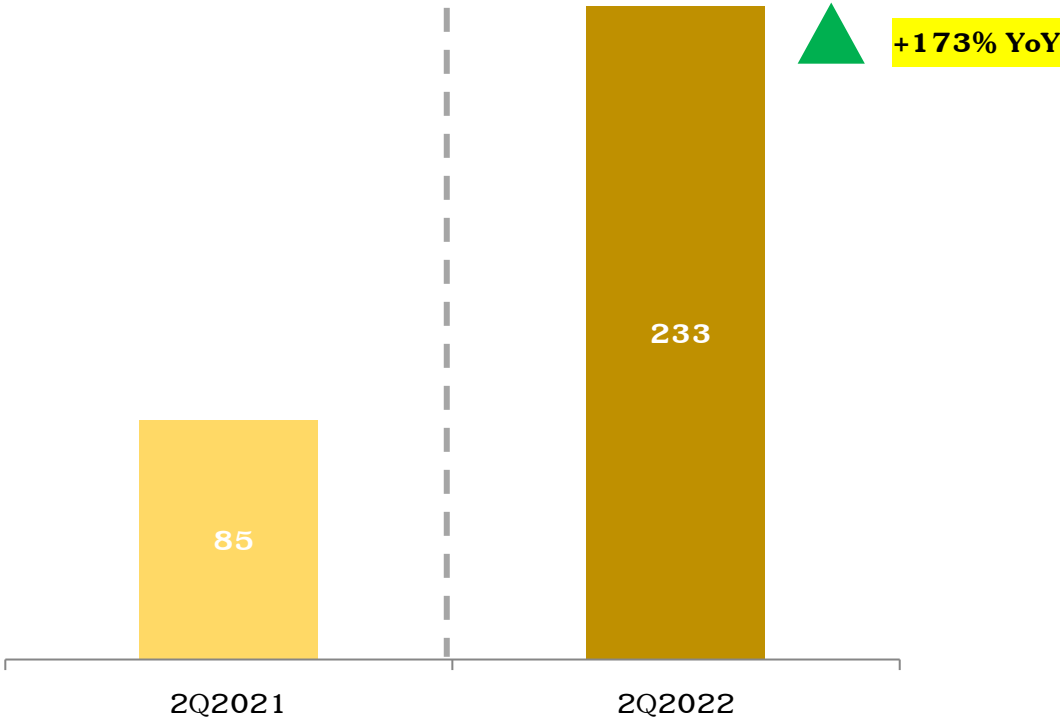


Note : Performance 6 Months

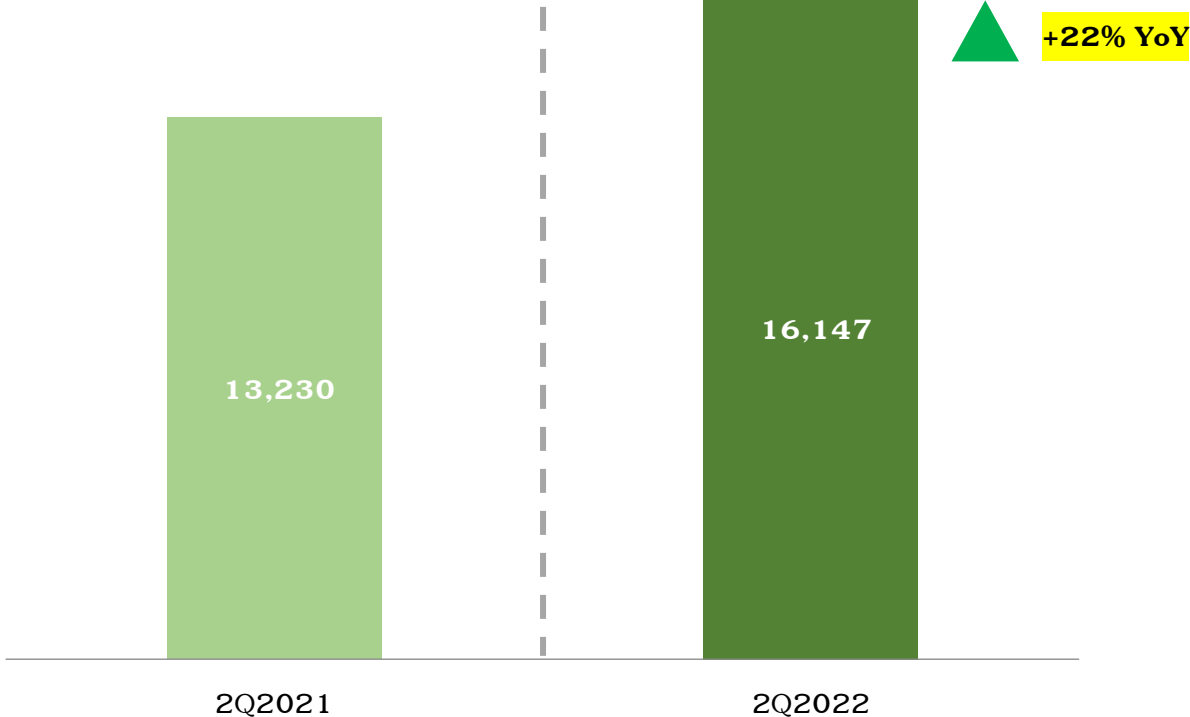
FINANCIAL SUMMARY

Sugar Business (Core Business)

SUGAR SALE VOLUME (1,000 Ton)



AVERAGE SUGAR SALE PRICE (THB/Ton)



Note : Performance 6 Months

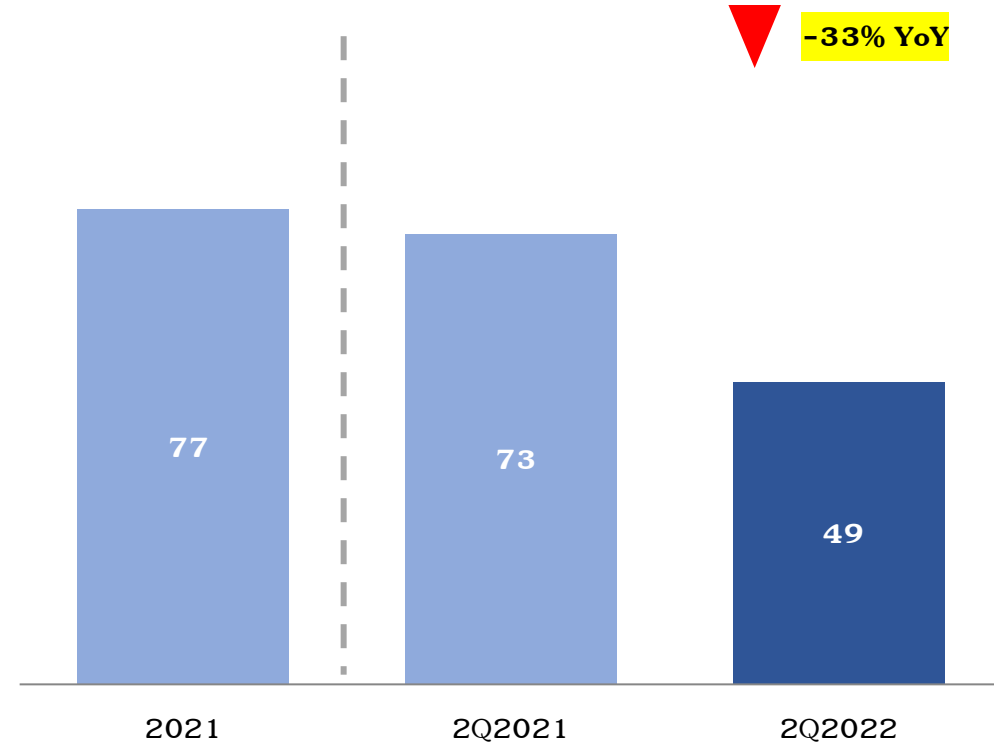
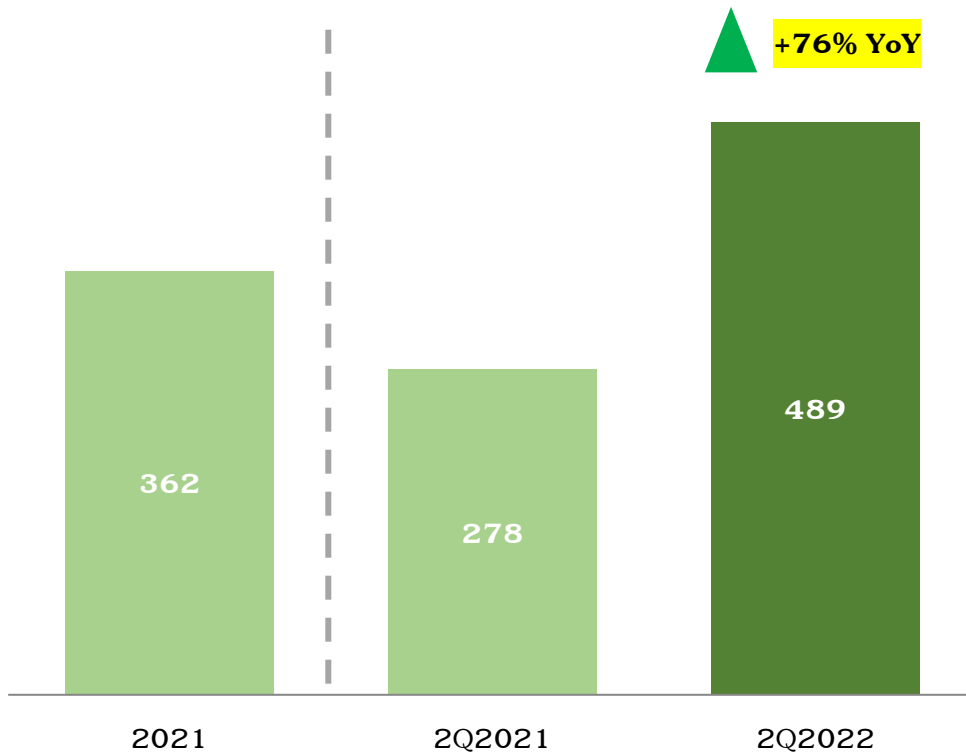
FINANCIAL SUMMARY

Agriculture Material Distribution Business (Fertilizer)



REVENUES (THBmn)

OPERATING PROFIT (THBmn)



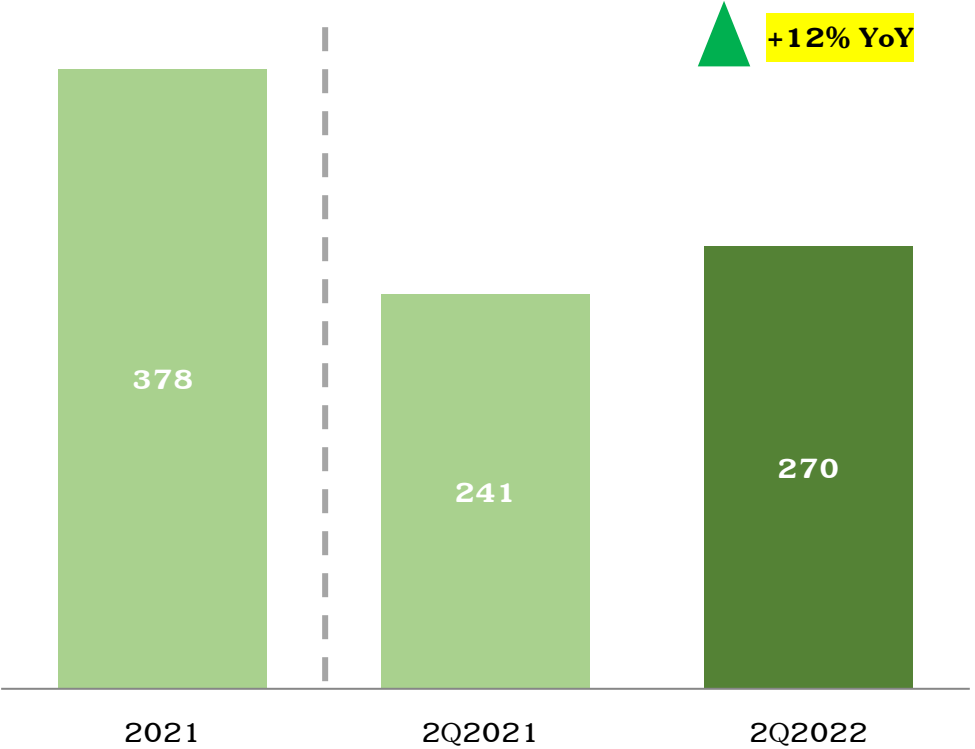
Note : Performance 6 Months

FINANCIAL SUMMARY

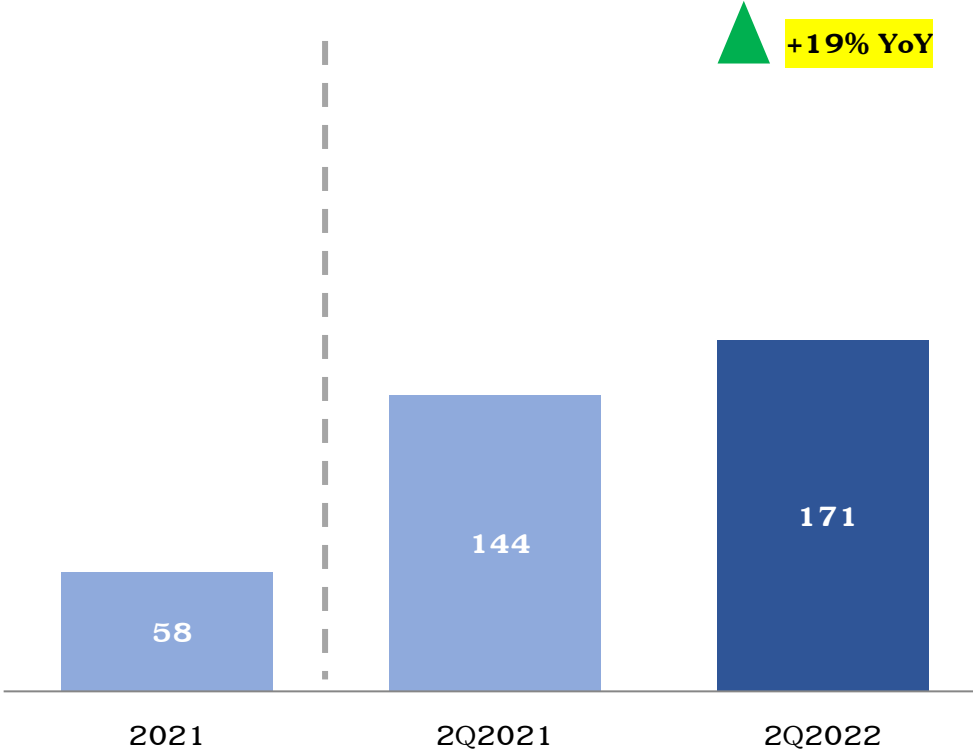
Power Business



REVENUES (THBmn)



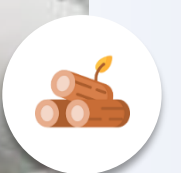
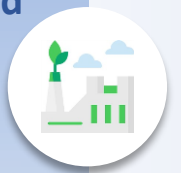
OPERATING PROFIT (THBmn)



Note : Performance 6 Months



Buriram Sugar Public Company Limited



Key Highlights

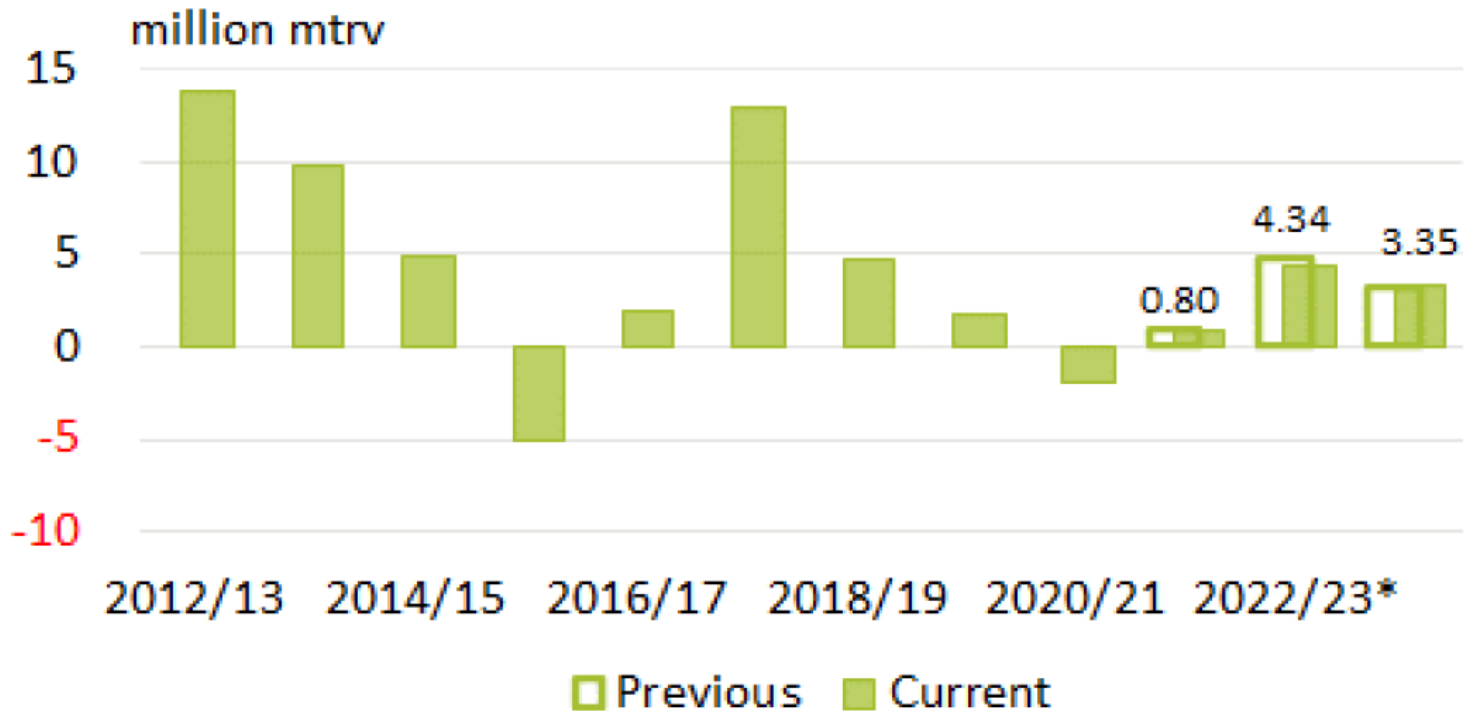
Key Factors

Financial Summary

Business Outlook

GLOBAL SUGAR BALANCE

GLOBAL SUGAR BALANCE

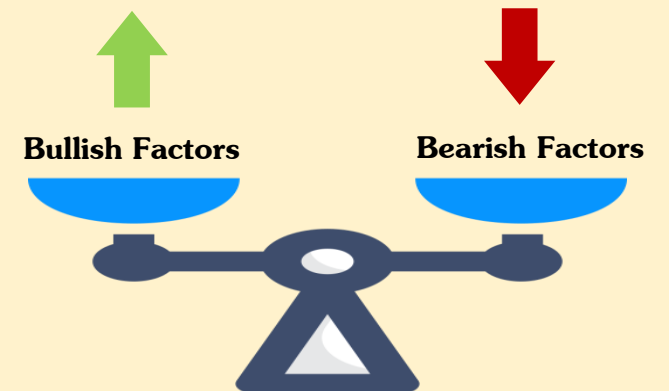


*Forecast

Source: S&P Global Commodity Insights

KEY FACTORS AFFECTING

- 👍 Strong white premium
- 👎 Strong Dollar
- 👍 Freight and lower energy price
- 👎 Weaker crude price
- 👍 Risk of delay in start of India export in Q4 2022
- 👎 Higher sugar mix in Brazil
- 👎 Surplus for 22/23



EXPECTED AVERAGE PRICE

18.00 – 19.50 C/lb

Q

A

Disclaimer

The views expressed here contain some information derived from publicly available sources that have not been independently verified. No representation or warranty is made as to the accuracy, completeness or reliability of the information. Any forward looking information in this presentation has been prepared on the basis of a number of assumptions which may prove to be incorrect. This presentation should not be relied upon as a recommendation or forecast by Buriram Sugar Public Company Limited. Nothing in this release should be construed as either an offer to sell or a solicitation of an offer to buy or sell shares in any jurisdiction.

For more information, please contact: IR@brr.co.th





 **BRR** บริษัท น้ำตาลบุรีรัมย์ จำกัด (มหาชน)
Buriram Sugar Public Company Limited

 **BSF** บริษัท โรงงานน้ำตาลบุรีรัมย์ จำกัด
Buriram Sugar Factory Co., Ltd.

 **BEC** บริษัท บุรีรัมย์พลังงาน จำกัด
Buriram Energy Co., Ltd.

 **KBF** บริษัท ปุ๋ยตราทุเรียน จำกัด
Key Brand Fertilizer Co., Ltd.

 **BSC** บริษัท น้ำตาลทุนบุรีรัมย์ จำกัด
Buriram Sugar Capital Co., Ltd.

 **BPC** บริษัท บุรีรัมย์เพาเวอร์ จำกัด
Buriram Power Co., Ltd.

 **BRLM** บริษัท บีโออาร์ โลจิสติกส์ แมเนจเม้นท์
BRR Logistics Management Co., Ltd.

 **CSF** บริษัท โรงงานน้ำตาลชำนิ จำกัด
Chamni Sugar Factory Co., Ltd.

 **BPP** บริษัท บุรีรัมย์เพาเวอร์พลัส จำกัด
Buriram Power Plus Co., Ltd.

 **SEW** บริษัท ซูการ์เคน อีโคแวร์ จำกัด
Sugarcane Ecoware Co., Ltd.


BGE
Buriram Green Energy
Co., Ltd.

Sugar Made in the Field